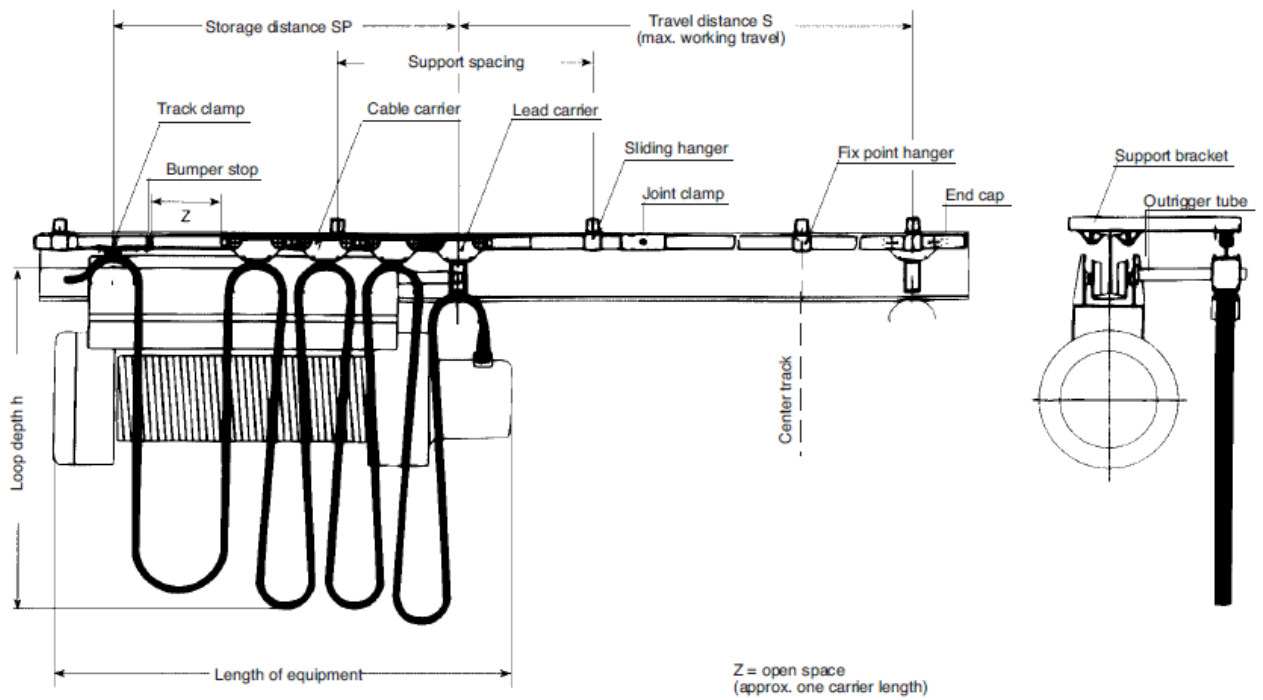




MUNCK FESTOON SYSTEMS



17 D Andromeda Crescent
 East Tamaki
 PO Box 64 220
 Botany 2163
 Manukau

Phone: (09) 272 7029
 Fax: (09) 272 7035

kranequip@kranequip.co.nz
 www.kranequip.co.nz



4151710	XCR-F17 2-way rotary L.S. for crane and trolley travel
644-672U02	Mobile pendant trolley
644-672U01	Mobile pendant trolley
644-674	Fixing clip
3815005	(644-666) End clamp
3815008	(644-669) Cable waggon w/acetal wheel!
3815007	(644-668) Cable waggon w/steel wheels
644-671	Towing trolley
644-664	Track clamp
3815004	(644-665) Track connection
3815000	(644-663) Track profile rail (Std.length 6 m)price per meter
3815011	(644-675) End cap
3815006	(644-667) End stop w/rubber buffer
644-679	Support bracket (U01 Incl. U06)
644-673	Top support bracket (U01 Incl. U06)
2410-7390238	Bracket for contactor panel
2410-7390239	Bracket for contactor panel
2410-7390269	Bracket for cable pusher
2410-7390267	Support bracket compl. for profile track
2410-7390268	Support bracket compl. for end power rail
644-677	Cross joint
644-678	Track profile rail (Std.length 6 m) Type 200/6 price per meter
644-681	Rubber endstopp
644-682U01	Conduit clip
644-682U02	Conduit clip
2410-7390271	Towing arm